

The first 300 participants


We are happy to announce that currently 380 patients were screened and signed informed consent. Of these patients the majority (195) are pre-dialysis patients. Thus, both the dialysis group and the transplantation group merit attention. Moreover, 320 participants were successfully randomized! We would like to thank you all for your efforts and keep on the good work!

The graph on the second page displays the overall inclusion and the inclusion per subgroup.

Cognitive function testing

The testing phase with a digital cognition test has started at the UMCG as there is preliminary data that SGLT2 inhibitors would preserve cognitive functioning. Participants will be asked to complete the Digit Symbol Substitution Test via a smartphone (android/iOs) or tablet (iOs) using an app developed by the company Orikami. During the test the participant has to match numbers with figures (as shown in the figure below). The test will take only 90 seconds and can be done at home or in case of no digital skills in the clinic with help of a nurse. After the testing phase in the UMCG it will extent to other sites in the Netherlands and thereafter globally.

Instructions ×



Here's how it works

At the top of the screen you will soon see a series of symbols.

Each symbol has a number between 1-9 associated with it, this is shown below the symbol.

Cognition test ×

+ △ ○ ≡ □ ∞ × ☆ ▣

1 2 3 4 5 6 7 8 9

∞

128

1	2	3
4	5	6
7	8	9

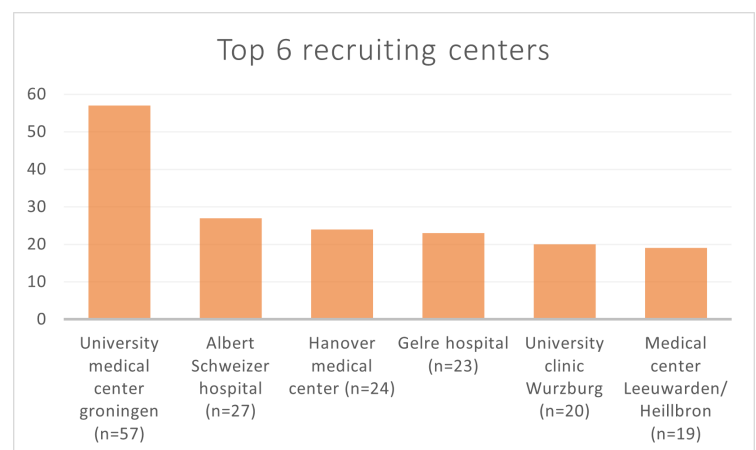
Tips and tricks for recruitment:

We are very glad to see the enthusiasm among the participating centres and therefore we would like to share some tips and tricks regarding participant recruitment at different stages of the recruitment:

- **Screening:** A 'pocket card' with the in-and exclusion criteria is available to use for the screening of participants to have a short and quick overview.
- **Information for potential participants:** Describe the unmet need regarding treatment and prevention of cardiovascular disease and kidney disease progression.
- **Follow-up visits:** Aim to schedule follow-up visits together with a regular hospital visit to reduce the burden for the participant and emphasize on this.

Intention To Treat Trial

At last, we would like to emphasize that the Renal lifecycle trial is based on the intention-to-treat principle. In case patients opt to withdraw from the study medication we ask them to stay in the trial for follow-up visits without study medication. Meaning that follow-up visits will be completed until end of the trial. We would like to mention this as a few sites reported a subject as 'lost to follow-up, whereas these patients could still have follow-up visits after withdrawal of medication.



Top 6 recruiting centers get the change to be co-author.

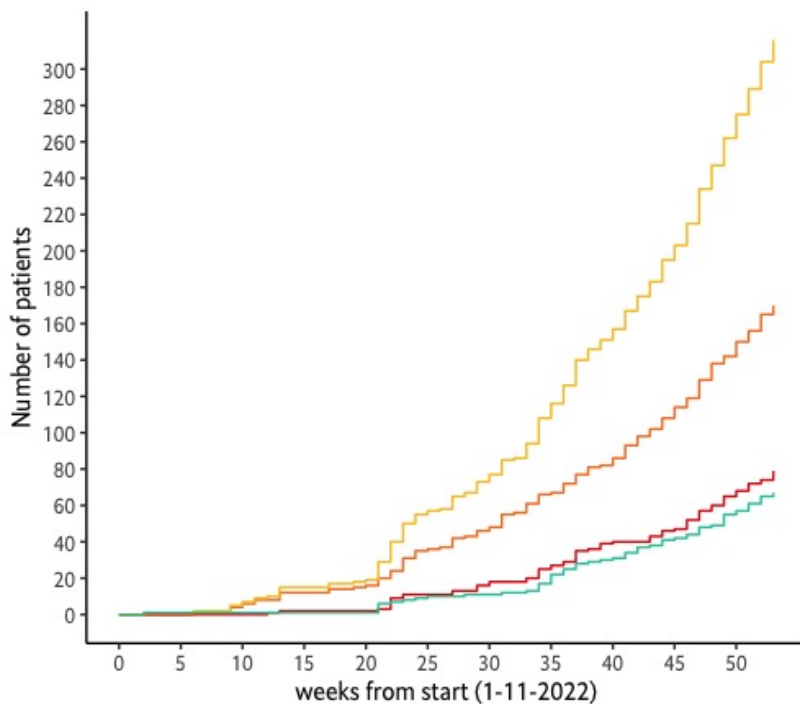
THANK YOU!

Compliments and a big thank you for all your efforts and commitment the last few months. We are very happy to see that there is such willingness to participate. Well done!

Data safety monitoring board meeting

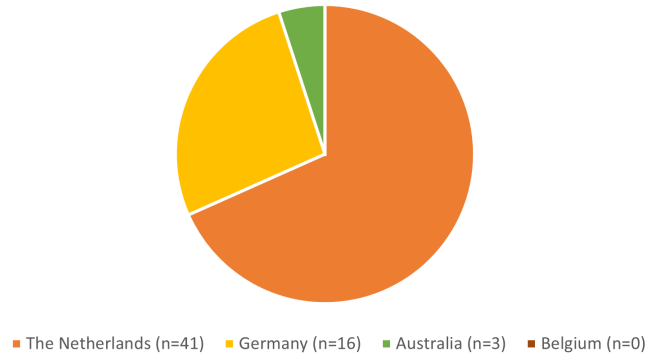
On the 10th of November the first meeting with the Data Safety Monitoring Board (DSMB) took place. Members of the committee are: prof. dr. A. Hoitsma, dr. W. van Dorp, dr. K. Halma and dr. N. Veeger. We would like to inform you that their decision was positive!

— CKD — Total
— Dialysis — Transplant



Patient screening numbers from start study until 10 november

Recruiting sites per country



Sites progress

Currently, already 60 sites are recruiting globally. The amount of sites per country is stated in the graph above. Moreover, 16 centers have ethical approval and are working on site activation and 22 centers are working on ethical approval.

Screenings and randomizations

Total participants screened	380	CKD	195
Total participants randomized:	320	Dialysis	99
		Transplant	83

You can find more information and/or contact us by using the following links:



www.renal-lifecycle.com



renal.lifecycle.trial@umcg.nl